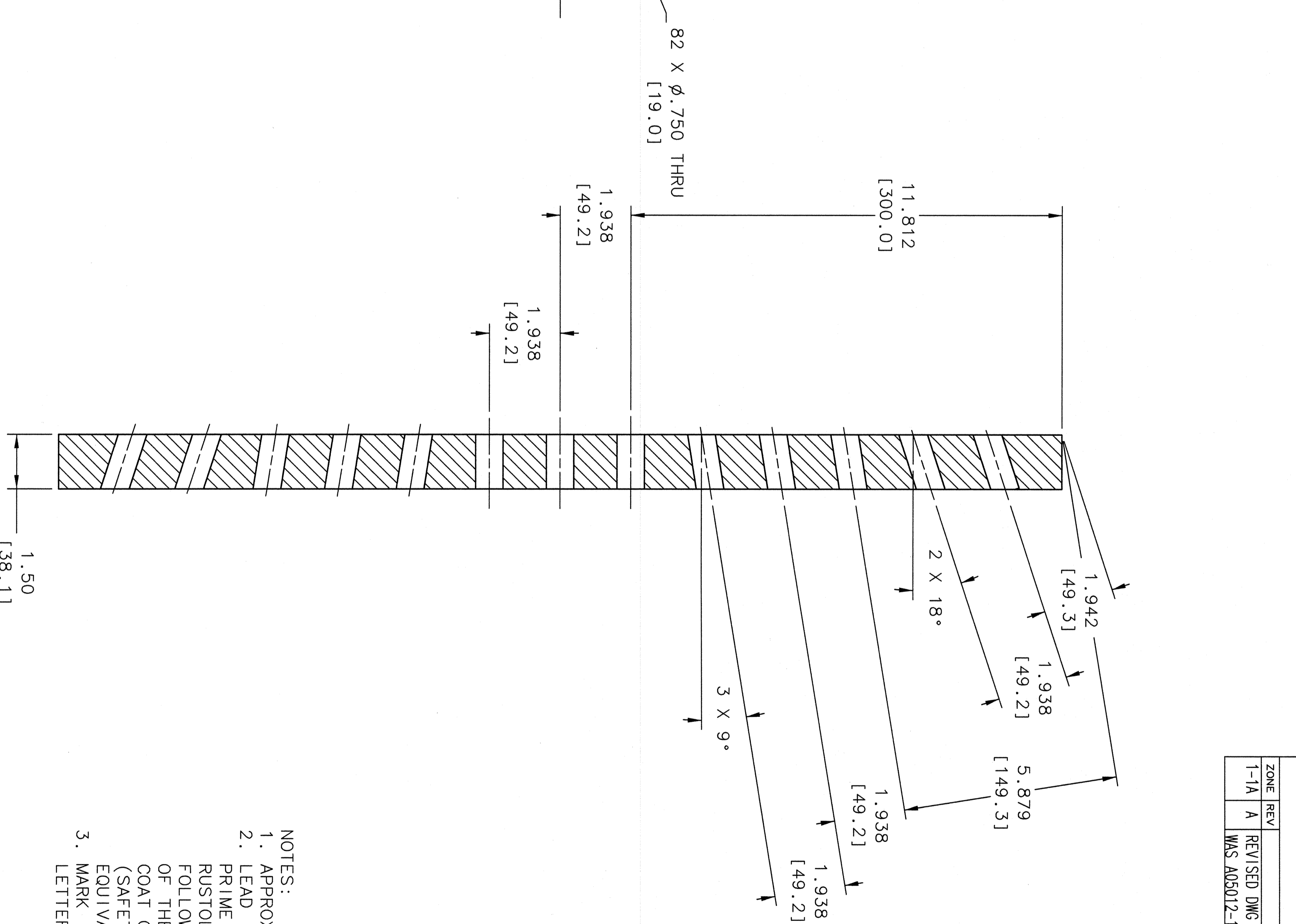
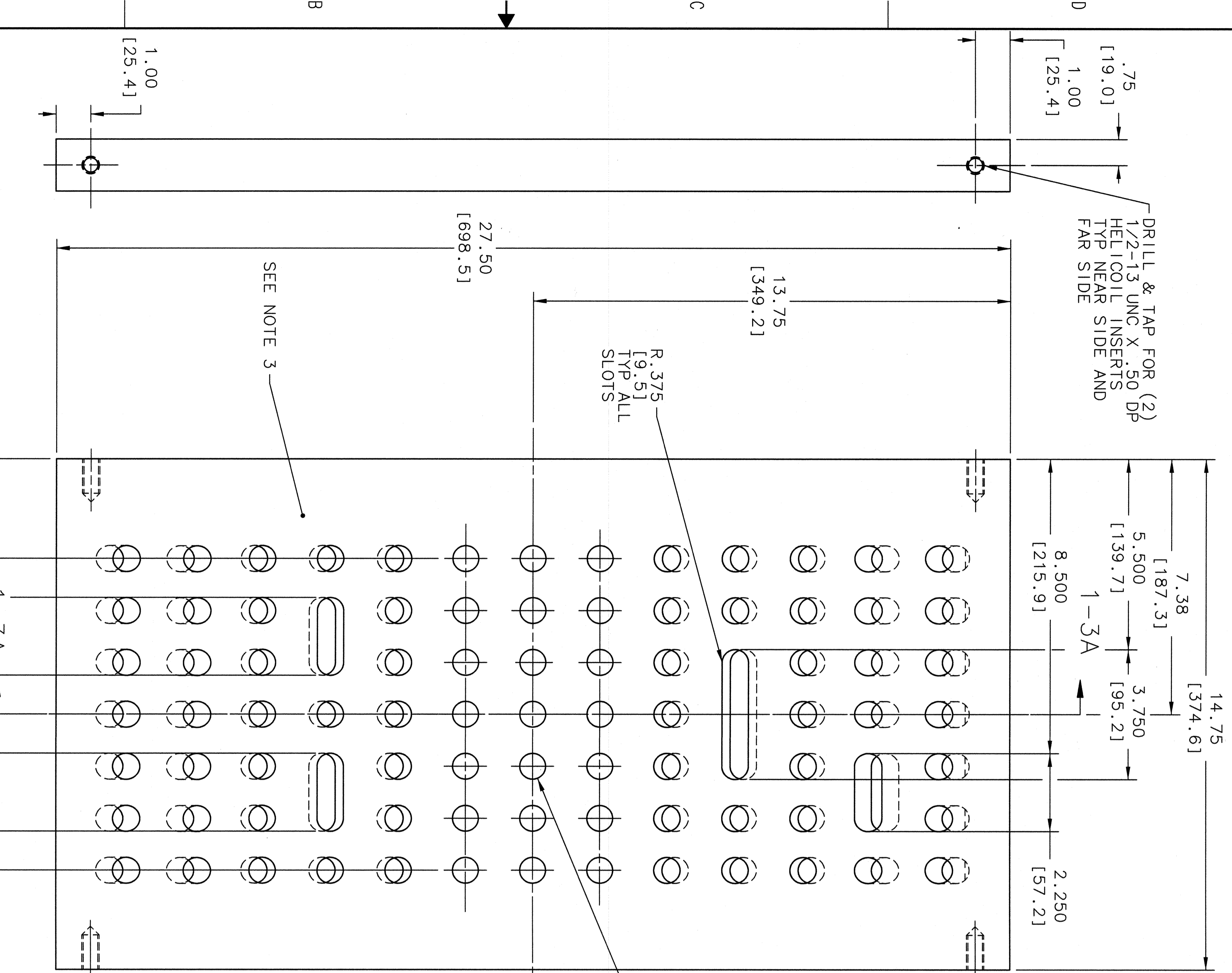


REVISION HISTORY				
ZONE	REV	DESCRIPTION	DATE	APPROVED
1-1A	A	REVISED DWG NO. A05102-15-02-0402	13FEB09	MILLER
		WAS A05012-15-02-0402	15FEB09	QAC



- NOTES:
1. APPROX. WEIGHT 222 LBS.
 2. LEAD IS TO BE PAINTED AS FOLLOWS:
PRIME WITH ONE 2.0 mil COAT OF RUSTOLEUM No. 206282 OR EQUIVALENT; FOLLOWED BY A SECOND COAT 1.5 mil OF THE SAME. LASTLY, APPLY A FINISH COAT OF 1.0 mil RUSTOLEUM NO. 206301 (SAFETY BLUE) ALKYD PAINT OR EQUIVALENT.
 3. MARK "TARGET SIDE" IN .25 IN HIGH LETTERS IN THIS AREA.

LEFT SIDE VIEW 1-8A

FRONT VIEW 1-6A

SECT VIEW 1-3A

UNITED STATES DEPARTMENT OF ENERGY
Jefferson Lab
 Central Electron Accelerator Facility
 Newport News, Virginia

HALL A - E, F, D
 SPECTROMETERS- BIG BLITE
 SIEVE PLATE ASSEMBLY
 SIEVE PLATE WITH HOLES

DOCUMENT CONTROL STAMP	TRACKING NO. N/A	APPROVALS	DATE
FINISH MACHINES 125 UNLESS OTHERWISE NOTED SHARPEN & BREAK ALL SHARP EDGES. DO NOT SCALE DRAWING	APPROVED J. MILLER 21JUN09	CHECKED A. CAVALVA 28JUN09	APPROVED A. CAVALVA 28JUN09
FINISH UNLESS OTHERWISE NOTED SHARPEN & BREAK ALL SHARP EDGES. DO NOT SCALE DRAWING	APPROVED D. HIGGINBOTHAM 02FEB09	CHECKED A. CAVALVA 28JUN09	APPROVED A. CAVALVA 28JUN09

SCALE 1:2